

THE EDGE

CHATSWOOD



THE EDGE

CHATSWOOD

Welcome to **The Edge**, a collection of boutique warehouses and workspaces designed for modern businesses. Located at 9 Gibbes Street, Chatswood and unique to the area's commercial landscape, these architecturally considered spaces combine practicality and presence – nestled in Sydney's Lower North Shore.



THE EDGE
CHATSWOOD

A STRATEGIC BASE FOR BUSINESS

Imagine your business positioned in one of Chatswood's most connected commercial pockets.



Located on Gibbes Street, just moments from Eastern Valley Way, The Edge places you within arm's reach of both leafy residential zones and major trade routes. With Bunnings, Anaconda and Total Tools around the corner, and seamless access to the CBD, Northern Beaches and North Shore - this is where logistics meet lifestyle.

Strategically placed. Smart design.
Solid investment.





9 Gibbes Street is unique to the Chatswood industrial precinct offering 25m² self storage to 200m² warehouses.

Whether you're a trade business, a growing brand, or an ambitious startup looking for a new home – The Edge offers a flexible mix of workspaces designed to meet your needs today and grow with you tomorrow.

Each space is crafted with industrial-grade finishes, natural light and practical design details – giving your business more than just a place to operate but a space to thrive.

THE EDGE



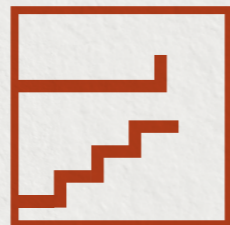
24/7
ACCESS



4.8M INTERNAL
WAREHOUSE
CLEARANCE



LUXURIOUS
BATHROOMS
IN EACH UNIT



MEZZANINE
LEVEL
WORKSPACE



DATA
ENABLED



3
PHASE POWER



ABUNDANT
NATURAL LIGHT

UNIQUE FEATURES





Artists Impression

1

Abundant Natural Light to Level 1 Workspace

2

Mezzanine Level Workspace and Additional Storage. 2.7m High Clearance.

3

4.8m High Internal Warehouse Clearance

4

3.5m Wide 4m High Roller Shutter Door

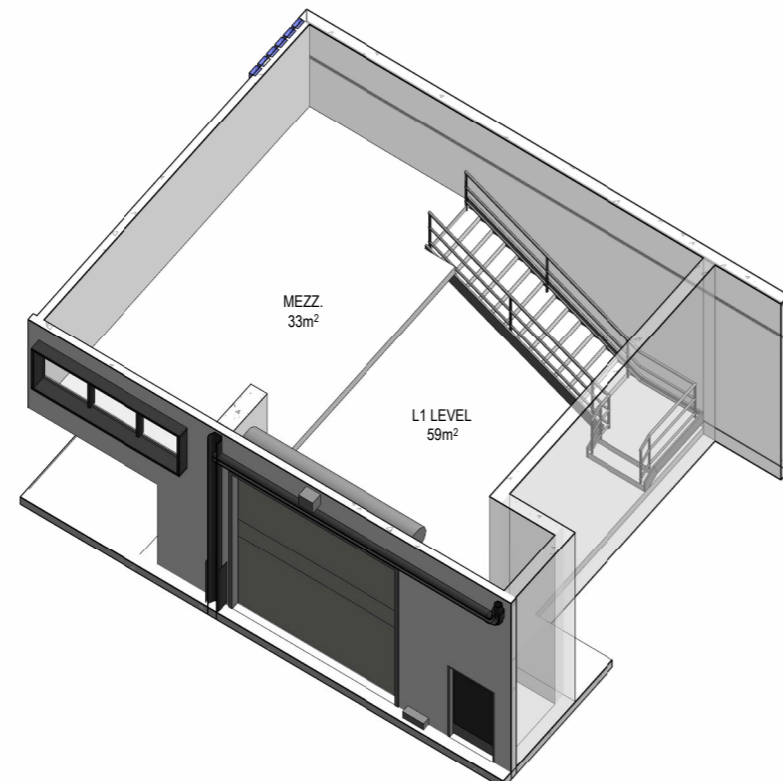
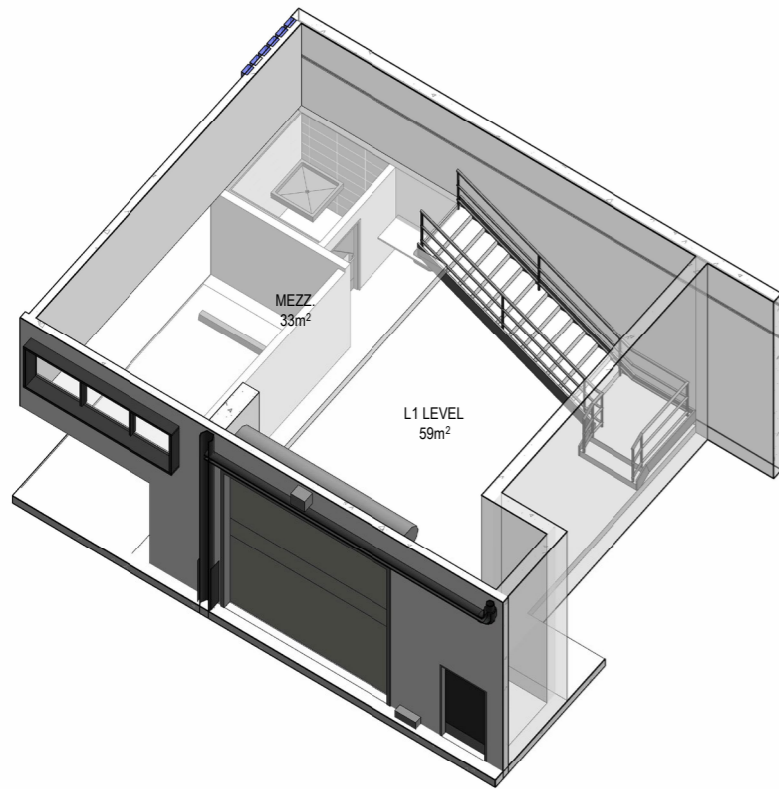
5

Data Enabled

WORK & SPACE

THE EDGE

Unit 14 3D Space



WAREHOUSE

BASEMENT 1

UNIT	AREA (SQM)	MEZZANINE (SQM)	TOTAL (SQM)	CARPARK
1	54.08		54.08	1
2	44.72		44.72	1
3	45.76		45.76	1
4	50.96		50.96	1
5	53.04		53.04	1
6	52		52	1

GROUND FLOOR

7	48.88	57.2	106.08	1
8	41.6		41.6	0
9	38.48		38.48	0
10	60.32	36.4	96.72	1
11	60.32	36.4	96.72	1

LEVEL 1

12	78	55.12	133.12	1
13	61.36	38.48	99.84	1
14	54.08	40.56	94.64	1
15	60.32	36.4	96.72	1
16	60.32	36.4	96.72	1

LEVEL 2

17	71.76	63.44	135.2	1
18	62.4	38.48	100.88	1
19	55.12	40.56	95.68	1
20	60.32	37.44	97.76	1
21	61.36	36.4	97.76	1
22	127.92	85.28	213.2	1

STORAGE

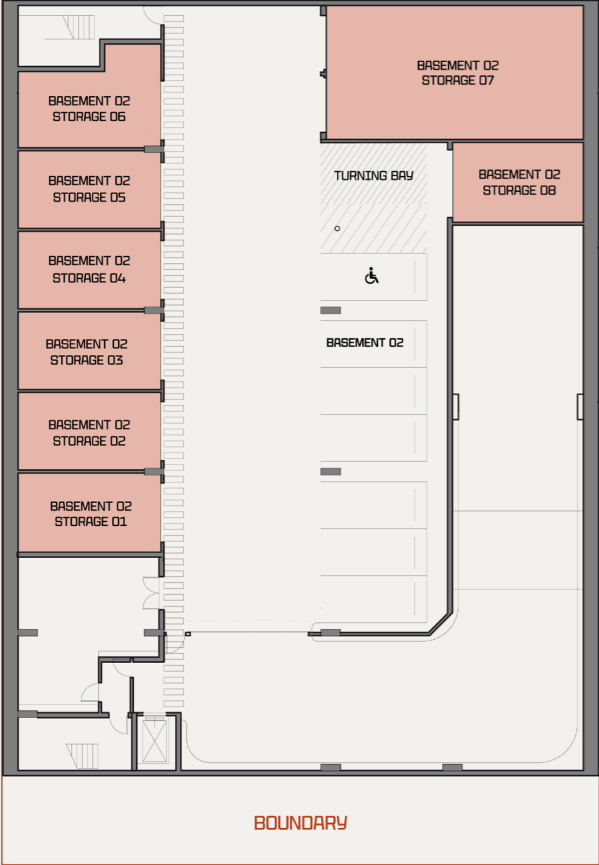
BASEMENT 2

UNIT	AREA (SQM)
1	24.96
2	30.16
3	30.16
4	30.16
5	30.16
6	35.36
7	94.64
8	29.12

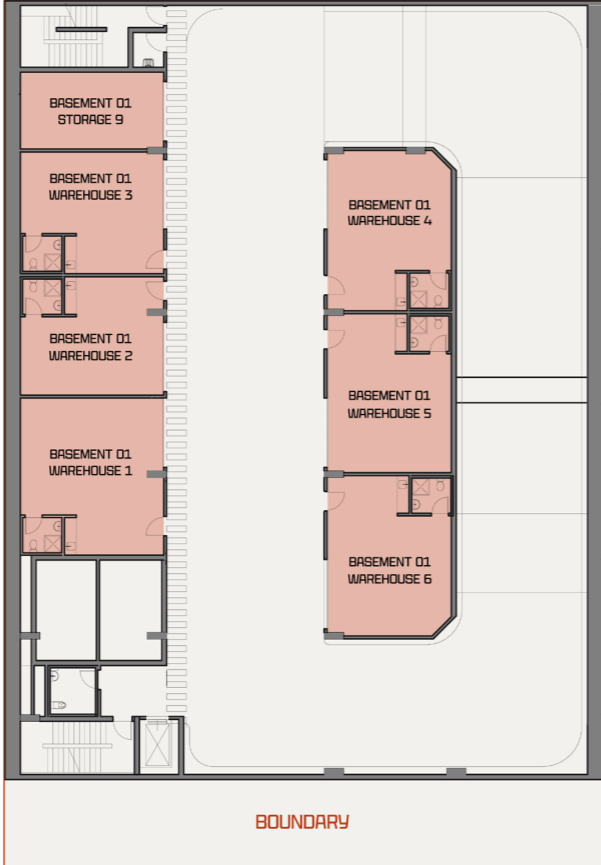
BASEMENT 1

9	32.24
---	-------

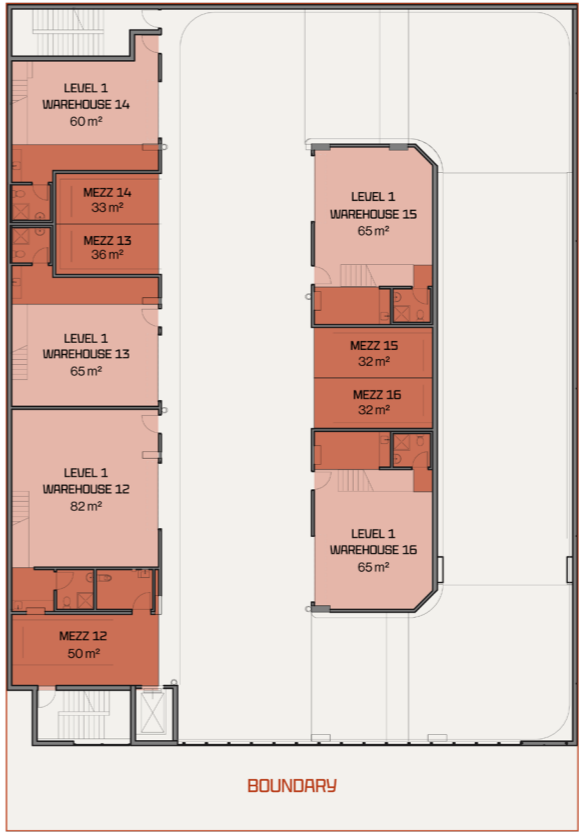
BASEMENT 2



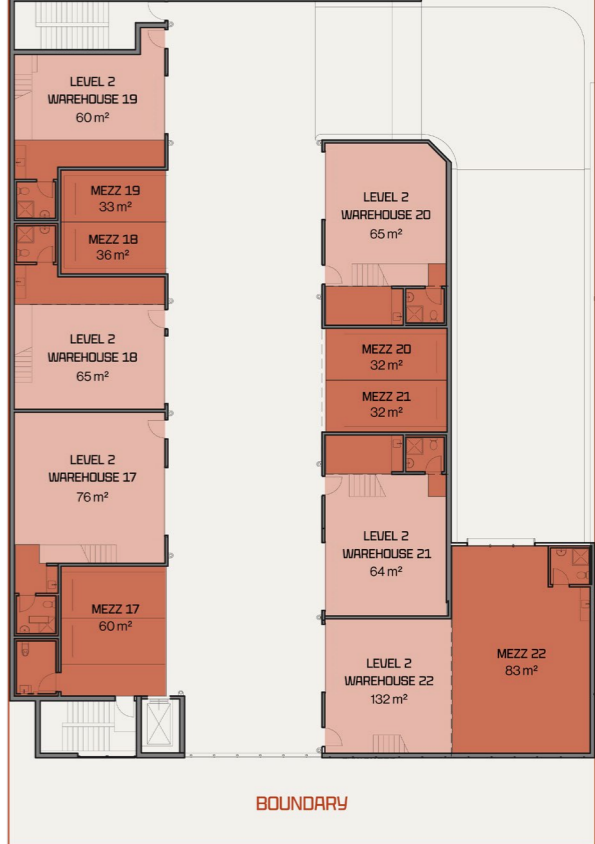
BASEMENT 1



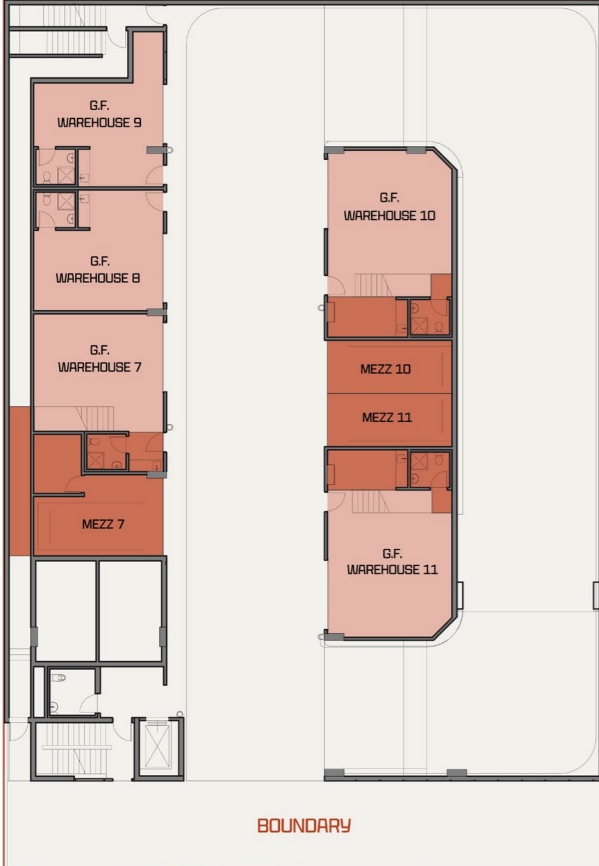
LEVEL 1



LEVEL 2

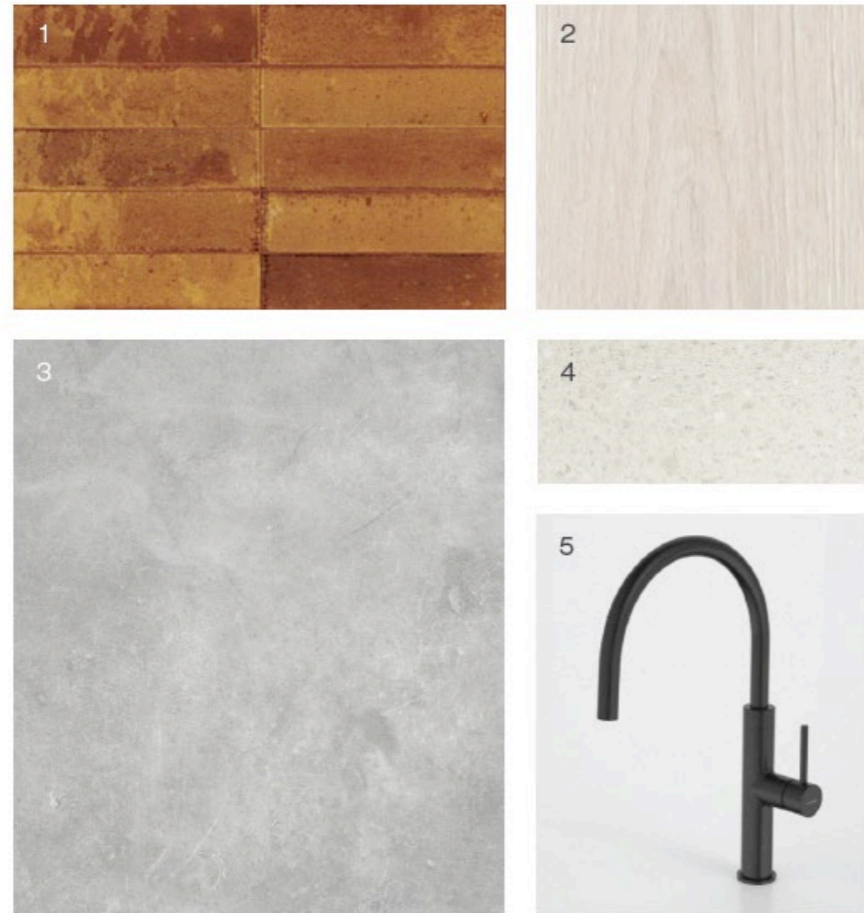


GROUND FLOOR



At The Edge, each floorplan has been thoughtfully considered. From compact self-storage to full-scale warehouse workspaces, no two units feel the same.

FINISHES & FIXTURES



Key

1. Kitchenette tiled splashback
2. Kitchenette joinery timber veneer
3. Bathroom tiles
4. Neutral stone benchtop
5. High quality bathroom fittings

THE EDGE

CHATSWOOD

The Architect

SBA is a leading design practice renowned for its expertise in industrial architecture and interior design. SBA transforms the logistical, environmental and human challenges of every project into opportunities for positive change. Their design approach combines active listening, insightful analysis and technical proficiency, creating spaces that fulfil immediate needs and adapt to change. SBA uses cross-disciplinary expertise and experience to interpret clients' visions, challenging and expanding their briefs to uncover innovative, more effective solutions.

The Developer

Platformco is the culmination of 35 years industry experience. Led by Julian Doyle, one of Australia's most experienced construction professionals, Platformco is unique in its understanding of the most important piece of the development process. The built form.

sba

PLATFORMCO



Scan to discover the new
boutique warehouse
workspaces in Chatswood.

THE EDGE

E

CHATSWOOD